



# *Another Stray Café*

— A LEADERSHIP GIVING OPPORTUNITY —

A CAPITAL CAMPAIGN BY TAKE PAWS RESCUE



Jefferson, Louisiana

*Sponsor Information Packet*

# ANOTHER STRAY CAFE

Take Paws Rescue is undertaking its most important expansion to date: the creation of **Another Stray Cafe**, a permanent rescue headquarters with a fully integrated veterinary clinic.

This project is a decisive step toward long-term sustainability, increased lifesaving capacity, and expanded access to affordable veterinary care across Jefferson Parish and beyond.

To make this vision real, Take Paws Rescue is seeking leadership-level partners whose investment will permanently shape the future of animal welfare in our community.

## Project Investment Overview

**Total Project Target:** Approximately \$1,078,000

- Building Acquisition: \$700,000
- Contractor & Build-Out Budget: \$168,000
- Veterinary Clinic Equipment & Setup: \$75,000
- Luxury Kennel Suites: \$85,326

***This investment establishes permanent infrastructure, not temporary solutions.***



# VISION FOR THE FACILITY

## A Spacious, Custom Play Yard

Secure, thoughtfully designed outdoor play yards provide daily exercise, enrichment, and decompression for dogs in care. These spaces support behavioral health, reduce stress, and help prepare dogs for successful adoption.



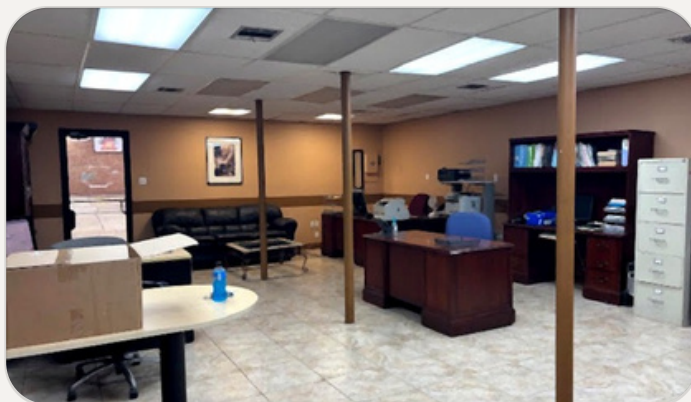
*Before*



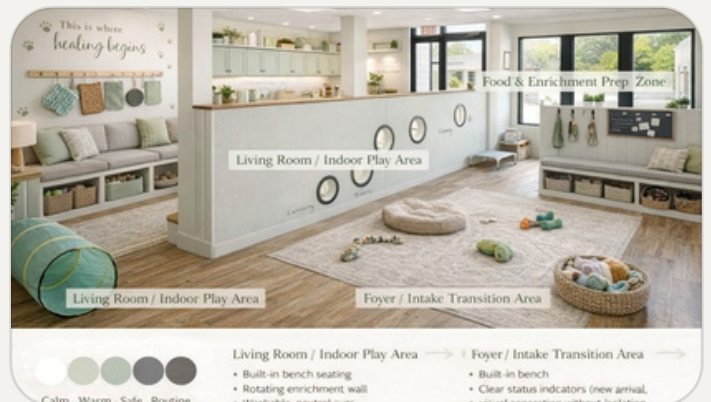
*After*

## Indoor Play Space

A climate-controlled indoor play space designed for daily exercise, enrichment, and safe socialization. This area allows dogs to move, play, and decompress regardless of weather, supporting both physical health and emotional well-being.



*Before*



*After*

# VISION FOR THE FACILITY

## A Dedicated Rescue and Kennel Space

A climate-controlled intake and recovery environment designed for safe housing, healing, and adoption preparation, with direct access to outdoor exercise yards.



*Before*



*After*

## An On-Site Veterinary Clinic

Routine rescue vetting completed in-house, dramatically reduced medical costs, and access to low-cost spay/neuter and basic veterinary services for the community.



*Before*



*After*

# TRANSFORMATIONAL FUNDING AREAS

## **Veterinary Clinic Build-Out | \$75,000**

---

A fully equipped, in-house veterinary clinic that dramatically reduces medical costs and expands access to care.

### **Includes:**

- Anesthesia machine
- Monitoring system with accessories
- Surgery table
- Spay/Neuter surgical tool kits
- Warming therapy (Bair Hugger)
- Laryngoscope and intubation equipment
- Bloodwork machines
- Exam tables
- X-ray table and imaging equipment
- SpO2 monitoring

## **Luxury Kennel Suites | \$85,326**

---

High-quality, low-stress kennel environments designed for recovery, comfort, and improving adoptability.

### **Includes:**

- (36) 4x4 luxury suite back-to-back kennels  
3 sets of 12 stalls | \$70,824
- (6) 4x6 luxury suite full kennel row  
1 set of 6 stalls | \$14,502





# LEADERSHIP SPONSOR OPPORTUNITIES

---

## **Founding Partner | \$250,000+**

- Naming recognition prominently displayed at the facility
- Recognition as a Founding Partner of Another Stray Cafe
- Logo and name placement across campaign materials, website, and select marketing
- Invitation to private walkthroughs, milestone events, and grand opening

## **Veterinary Clinic Naming Partner | \$100,000**

- Naming rights to the on-site veterinary clinic within Another Stray Cafe
- Permanent recognition inside the clinic space
- Featured recognition in marketing, press, and digital storytelling related to medical impact

## **Kennel & Recovery Wing Partner | \$50,000**

- Naming recognition for a kennel or recovery area within Another Stray Cafe
- Permanent signage acknowledging sponsorship
- Recognition in donor materials and facility features

## **Legacy Builder | \$25,000**

- Recognition within the facility donor wall
- Inclusion in capital campaign acknowledgments
- Digital and print recognition as a leadership supporter



# WHY LEADERSHIP SUPPORT MATTERS

## Major gifts do more than fund line items.

They accelerate timelines, stabilize operations, and ensure this project opens fully equipped and fully functional.

Leadership donors make it possible for:

- More dogs to receive immediate medical care
- Rescue dollars to stretch further
- Affordable veterinary services to reach more families
- Take Paws Rescue to operate from a position of strength for decades to come



## A Lasting Legacy

Another Stray Cafe will stand as a permanent, lifesaving institution.

Leadership donors will be recognized not just for their generosity, but for their role in building something that endures.

*We invite you to partner with us at the level that reflects your vision, values, and commitment to lasting impact.*

# HOW TO CONTRIBUTE

## Mail a Check

Please make checks payable to **Take Paws Rescue** and note **Capital Campaign Donation** in the memo line.

**Take Paws Rescue**  
2730 Banks Street  
New Orleans, LA 70119

## Donate Online

Please list **Capital Campaign** in the notes.

<https://www.takepawsrescue.org/donate>

## Venmo

@takepawsrescue (Under “Charities”)

